



# D.H.110 SEA VIXEN

Assembly and Operating Instructions



PLEASE READ THIS MANUAL CAREFULLY BEFORE OPERATING THIS PLANE



## Specifications

Length: 888mm  
Flight weight: 1500g  
Wingspan: 1000mm  
Wing area: 25.70dm<sup>2</sup>  
Radio system: 5CH Tx and 5CH Rx  
Brushless motor 2836 Out runner KV2950  
45A ESC  
14.8V-3300mAh-25C Li-Po Battery

### Safety Precautions:

- This is an electric remote controllable model plane and is not a toy.
- This D.H.110 model is designed for intermediate to advanced pilots.
- Children younger than 12 years old must be accompanied by an adult when operating this model.
- Only fly this model in an open area and away from crowds of people, buildings, and high voltage power lines.
- Please always put safety first and operate this model as instructed and to heed the warnings as stated in this manual.
- The supplier/manufacturer accepts no responsibility for damage or injury caused by the use of this model.



**Assemble Instructions:**

1. Install the cockpit. Gule the canopy on the cockpit.



2. Fit and install the aileron. Install the rod to the aileron. The rod connects the servo to the aileron. Glue the plastic gum on the main wing.



**Battery Charging:**

The battery must be fully charged before you attempt to fly this D.H.110 To charge the battery, connect the Li-Po battery to the balance charger and the charger to the universal adapter. The universal adapter in turn connects to a car battery via the two alligator clips at the end.

The green charging light will indicate that the battery is charging. When the green light disappears, then it is ready to use. Charging usually takes 2.5 hours but it does vary depending upon how much charge your battery already has. The Li-Po battery will not get hot when charging. DO NOT overcharge the battery as this will damage it.

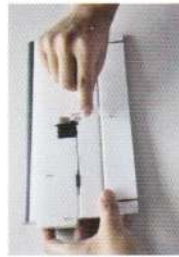
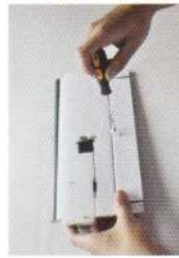
**Important Safety Notice:**

When charging the battery, do not leave it unattended. Do not leave this battery charging when children are present. Observe the charger and battery for any abnormality such as a sudden rise in temperature or puffiness.

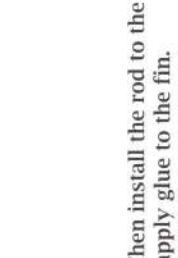
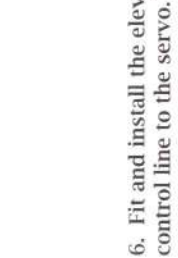
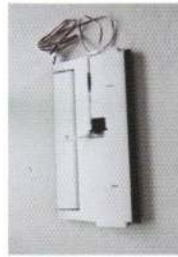
3. Glue the plastic on the bottom of fuselage.



5. Apply glue the vertical fin.



4. Apply glue the main wing on the fuselage.



6. Fit and install the elevator. Then install the rod to the servo. And connect the elevator control line to the servo. Then apply glue to the fin.





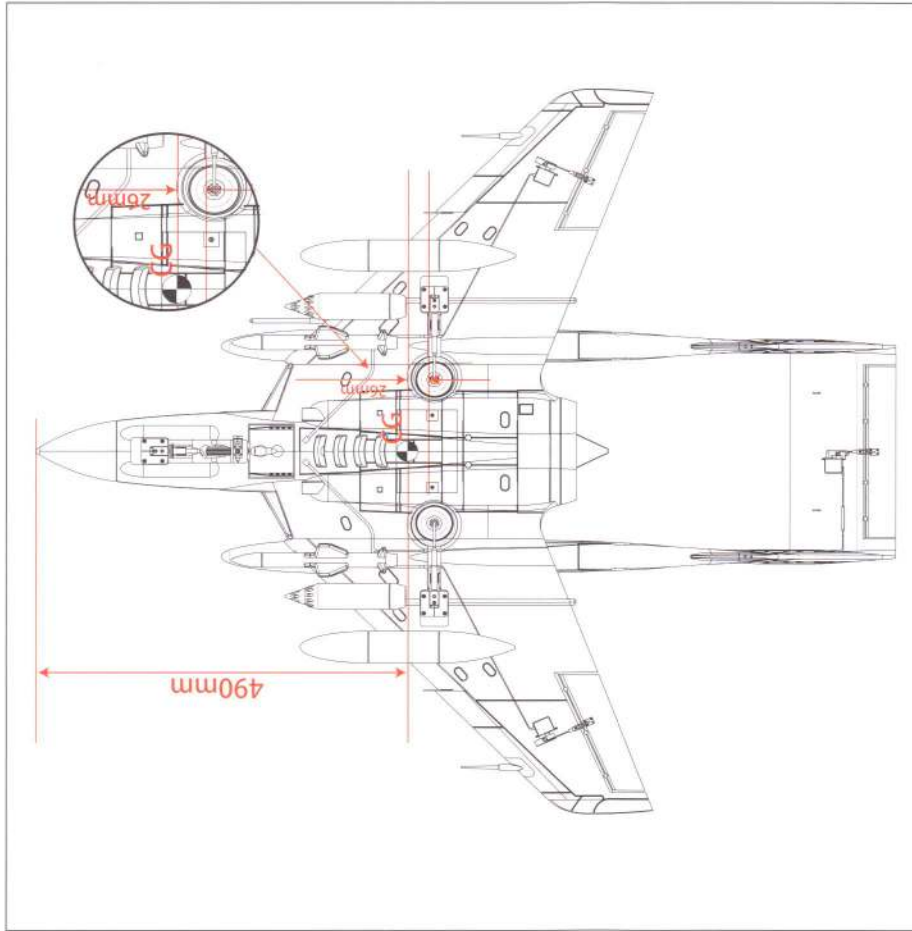
7. Apply glue the lines on the fuselage .



8. Apply glue the missiles on the fuselage



9. Make sure the center of gravity (CG) is as indicated in the following diagram.



## Operating the D.H.110

### Powering Up

1. The correct power up process is to turn on the transmitter (controller) first.
2. Lower both the throttle stick (left joystick for Mode 2) and the throttle trim tab (left vertical trim tab on Mode 2) all the way down before powering up the D.H.110.
3. To power on the D.H.110, connect the battery to the ESC (electric speed controller).

### Final Adjustments:

1. Turn on the transmitter. Make sure the throttle stick and throttle trim tab are both all the way down. Center all the other trim tabs.
2. Connect the plane's battery to the ESC (Electronic Speed Controller) underneath the plane's cockpit. When connected, you will hear three beeps to indicate that it is working.
3. Check that the servos in the plane are set in the neutral position. You may have to make minor adjustments to the servos or push rods. The Aileron and elevator surfaces should be centered.
4. Place the canopy back onto the plane and attach the decals as shown in the pictures on the box.

### Warning:

- Beginners should seek help and advice from an experienced person.
- Choose an area large enough and away from buildings, people, vehicles, and overhead power lines. Always check that your AA batteries are new or fully charged if using rechargeable batteries. After turning on your transmitter and plane, do a range test before flying.
- Do not fly in presence of a strong wind or rain.
- Do not try to catch the plane by hand when flying.
- Do not touch the propeller when the motor is running. You will cut yourself.
- Always disconnect your battery after every use.

We hope you have enjoyed assembling this model.